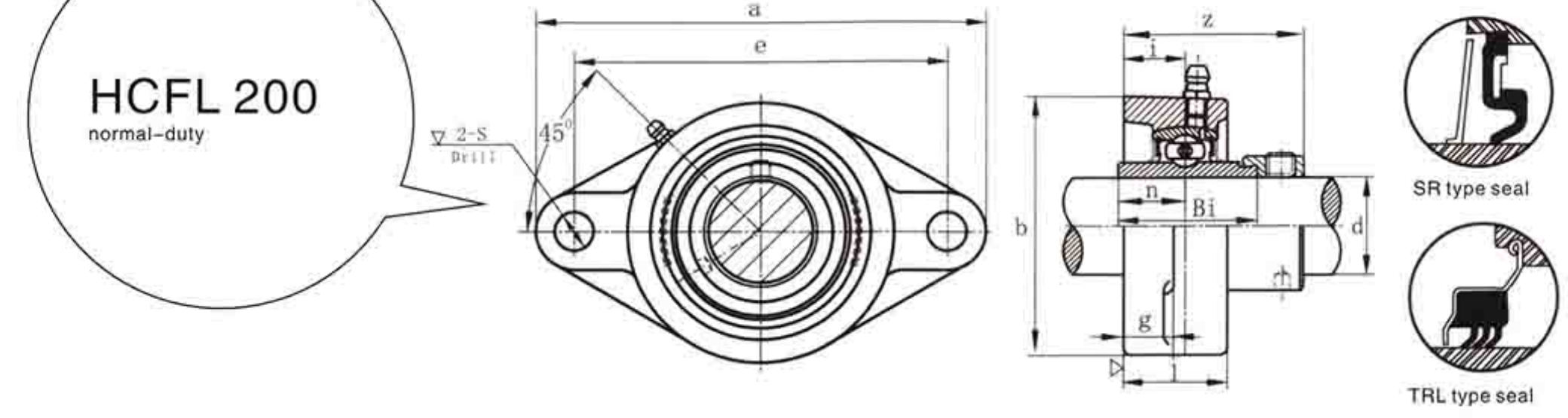


UCFL 200
normal-duty

SR type seal

TRL type seal

带座轴承代号 Bearing Unit	轴径 Shaft Dia	外形尺寸 (英寸) 或 (毫米) Dimensions(in)or(mm)											螺栓 Bolt Used	轴承代号 Bearing	座代号 Housing	重量 Weight
No.	d	a	e	i	g	l	S	b	Z	Bi	n	No.	No.	No.	(kg)	
(in.) (mm)																
UCFL 201	12	4 7/16	3 35/64	19/32	15/32	1	15/32	2 3/8	1 5/16	1.2205	0.5000	M10	3/8	UC 201	FL201	0.49
UCFL 201-8	1/2	113	90	15	12	25.5	12	60	33.3	31.0	12.7	M10	3/8	UC 201-8	FL201	0.49
UCFL 202	15	4 7/16	3 35/64	19/32	15/32	1	15/32	2 3/8	1 5/16	1.2205	0.5000	M10	3/8	UC 202	FL202	0.49
UCFL 202-10	5/8	113	90	15	12	25.5	12	60	33.3	31.0	12.7	M10	3/8	UC 202-10	FL202	0.49
UCFL 203	17	4 7/16	3 35/64	19/32	15/32	1	15/32	2 3/8	1 5/16	1.2205	0.5000	M10	3/8	UC 203	FL203	0.49
UCFL 203-11	11/16	113	90	15	12	25.5	12	60	33.3	31.0	12.7	M10	3/8	UC 203-11	FL203	0.49
UCFL 204-12	20	4 7/16	3 35/64	19/32	15/32	1	15/32	2 3/8	1 5/16	1.2205	0.5000	M10	3/8	UC 204-12	FL204	0.49
UCFL 204	3/4	113	90	15	12	25.5	12	60	33.3	31.0	12.7	M10	3/8	UC 204	FL204	0.49
UCFL 205-14	25	5 1/8	3 57/64	5/8	9/16	1 1/16	5/8	2 11/16	1 13/32	1.3386	0.5630	M14	1/2	UC 205-14	FL205	0.63
UCFL 205-15	15/16	130	99	16	14	27	16	68	35.7	34.0	14.3	M14	1/2	UC 205-15	FL205	0.63
UCFL 205	1	130	99	16	14	27	16	68	35.7	34.0	14.3	M14	1/2	UC 205	FL205	0.63
UCFL 205-16	1	130	99	16	14	27	16	68	35.7	34.0	14.3	M14	1/2	UC 205-16	FL205	0.63
UCFL 206-18	30	5 3/16	4 39/64	45/64	9/16	7/32	5/8	3 5/32	1 19/32	1.5000	0.6260	M14	1/2	UC 206-18	FL206	0.94
UCFL 206	1 1/8	148	117	18	14	31	16	80	40.2	38.1	15.9	M14	1/2	UC 206	FL206	0.94
UCFL 206-19	3 1/16	148	117	18	14	31	16	80	40.2	38.1	15.9	M14	1/2	UC 206-19	FL206	0.94
UCFL 206-20	1 1/4	148	117	18	14	31	16	80	40.2	38.1	15.9	M14	1/2	UC 206-20	FL206	0.94
UCFL 207-20	35	6 11/32	5 1/8	3/4	5/8	1 1/32	5/8	3 17/32	1 3/4	1.6890	0.6890	M14	1/2	UC 207-20	FL207	1.2
UCFL 207-21	1 1/4	161	130	19	16	34	16	90	44.4	42.9	17.5	M14	1/2	UC 207-21	FL207	1.2
UCFL 207-22	1 5/16	161	130	19	16	34	16	90	44.4	42.9	17.5	M14	1/2	UC 207-22	FL207	1.2
UCFL 207	3 3/8	161	130	19	16	34	16	90	44.4	42.9	17.5	M14	1/2	UC 207	FL207	1.2
UCFL 207-23	1 7/16	161	130	19	16	34	16	90	44.4	42.9	17.5	M14	1/2	UC 207-23	FL207	1.2
UCFL 208-24	40	6 7/8	5 43/64	53/64	5/8	1 13/32	5/8	3 15/16	2 1/64	1.9370	0.7480	M14	1/2	UC 208-24	FL208	1.6
UCFL 208-25	1 9/16	175	144	21	16	36	16	100	51.2	49.2	19.0	M14	1/2	UC 208-25	FL208	1.6
UCFL 208	1 9/16	175	144	21	16	36	16	100	51.2	49.2	19.0	M14	1/2	UC 208	FL208	1.6
UCFL 209-26	45	7 3/32	5 53/64	55/64	23/32	1 1/2	3/4	4 1/4	2 1/16	1.9370	0.7480	M16	5/8	UC 209-26	FL209	1.9
UCFL 209-27	1 11/16	188	148	22	18	38	19	108	52.2	49.2	19.0	M16	5/8	UC 209-27	FL209	1.9
UCFL 209-28	1 3/4	188	148	22	18	38	19	108	52.2	49.2	19.0	M16	5/8	UC 209-28	FL209	1.9
UCFL 209	1 3/4	188	148	22	18	38	19	108	52.2	49.2	19.0	M16	5/8	UC 209	FL209	1.9
UCFL 210-30	50	7 3/4	6 3/16	55/64	23/32	9/16	3/4	4 17/32	2 5/32	2.0315	0.7480	M16	5/8	UC 210-30	FL210	2.2
UCFL 210-31	1 15/16	197	157	22	18	40	19	115	54.6	51.6	19.0	M16	5/8	UC 210-31	FL210	2.2
UCFL 210	2	197	157	22	18	40	19	115	54.6	51.6	19.0	M16	5/8	UC 210	FL210	2.2
UCFL 210-32	2	197	157	22	18	40	19	115	54.6	51.6	19.0	M16	5/8	UC 210-32	FL210	2.2
UCFL 211-32	55	8 13/16	7 1/4	63/64	25/32	1 1/16	3/4	5 1/8	2 19/64	2.1890	0.8740	M16	5/8	UC 211-32	FL211	3.2
UCFL 211-34	2 1/8	224	184	25	20	43	19	130	58.4	55.6	22.2	M16	5/8	UC 211-34	FL211	3.2
UCFL 211	2 1/8	224	184	25	20	43	19	130	58.4	55.6	22.2	M16	5/8	UC 211	FL211	3.2
UCFL 211-35	2 3/16	224	184	25	20	43	19	130	58.4	55.6	22.2	M16	5/8	UC 211-35	FL211	3.2
UCFL 212-36	60	9 27/32	8 1/64	9/64	25/32	7/8	29/32	5 1/2	2 45/64	2.5630	1.0000	M20	3/4	UC 212-36	FL212	4.1
UCFL 212	2 1/4	250	202	29	20	48	23	140	68.7	65.1	25.4	M20	3/4	UC 212	FL212	4.1
UCFL 212-38	2 3/8	250	202	29	20	48	23	140	68.7	65.1	25.4	M20	3/4	UC 212-38	FL212	4.1
UCFL 212-39	2 1/16	250	202	29	20	48	23	140	68.7	65.1	25.4	M20	3/4	UC 212-39	FL212	4.1
UCFL 213-40	65	10 5/32	8 17/64	3/16	15/16	1 1/32	29/32	6 3/32	2 3/4	2.5630	1.0000	M20	3/4	UC 213-40	FL213	5.1
UCFL 213	2 1/2	258	210	30	24	50	23	155	69.7	65.1	25.4	M20	3/4	UC 213	FL213	5.1
UCFL 214-44	70	10 7/16	8 1/2	1 7/32	15/16	2 1/8	29/32	6 5/16	2 31/32	2.9370	1.1890	M20	3/4	UC 214-44	FL214	5.9
UCFL 214	2 3/4	265	216	31	24	54	23	160	75.4	74.6	30.2	M20	3/4	UC 214	FL214	5.9
UCFL 215	75	10 13/16	8 5/64	1 1/32	15/16	2 13/64	29/32	6 1/2	3 3/32	3.0630	1.3110	M20	3/4	UC 215	FL215	6.4
UCFL 215-48	3	275	225	34	24	56	23	165	78.5	77.8	33.3	M20	3/4	UC 215-48	FL215	6.4
UCFL 216	80	11 3/32	9 11/64	1 11/32	15/16	2 9/32	63/64	7 3/32	3 9/32	3.2520	1.3110	M22	7/8	UC 216	FL216	7.9
UCFL 216-50	3 1/8	290	233	34	24	58	25	180	83.3	82.6	33.3	M22	7/8	UC 216-50	FL216	7.9
UCFL 217-52	85	12 9/16	9 5/64	27/64	1 1/32	2 15/32	63/64	7 15/32	3 7/16	3.3740	1.3425	M22	7/8	UC 217-52	FL217	9.6
UCFL 217	3 1/4	305	248	36	26	63	25	190	87.6	85.7	34.1	M22	7/8	UC 217	FL217	9.6
UCFL 218-56	90	12 19/32	10 1/16	1 1/32	1 1/32	2 43/64	63/64	8 1/16	3 51/64	3.7795	1.5630	M22	7/8	UC 218-56	FL218	12.1
UCFL 218	3 1/2	320	265	40	26	68	25	205	96.3	96.0	39.7	M22	7/8	UC 218	FL218	12.1

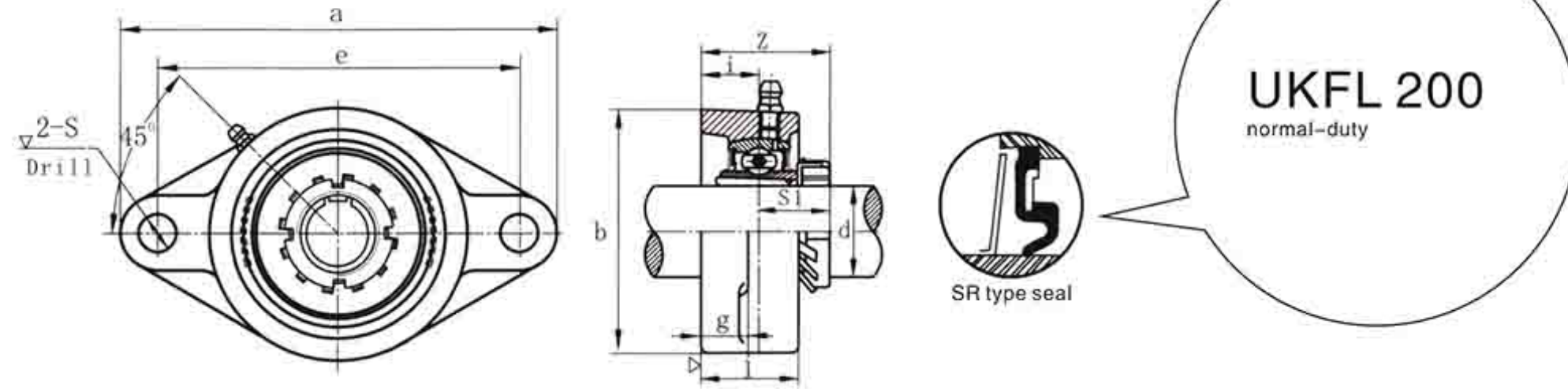


HCFL 200
normal-duty

SR type seal

TRL type seal

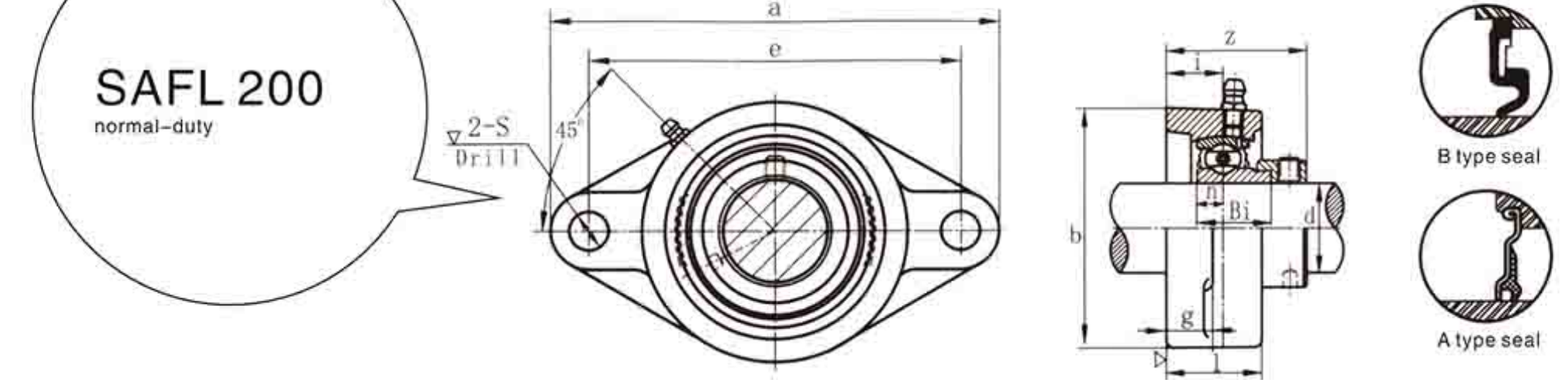
带座轴承代号 Bearing Unit	轴径 Shaft Dia	外形尺寸 (英寸) 或 (毫米) Dimensions(in)or(mm)											螺栓 Bolt Used	轴承代号 Bearing	座代号 Housing	重量 Weight
No.	d	a	e	i	g	l	S	b	Z	Bi	n	No.	No.	No.	(kg)	
(in.) (mm)																
HCFL 201	12	3 57/64	3 1/64	19/32	7/16	31/32	29/64	2 1/4	1 33/64	1.0944	0.5472	M10	3/8	HC 201	FL201	0.48
HCFL 201-8	1/2	99	76.5	15	11	24.5	11.5	57	38.4	27.8	13.9	M10	3/8	HC 201-8	FL201	0.48
HCFL 202	15	3 57/64	3 1/64	19/32	7/16	31/32	29/64	2 1/4	1 33/64	1.0944	0.5472	M10	3/8	HC 202	FL202	0.48
HCFL 202-10	5/8	99	76.5	15	11	24.5	11.5	57	38.4	27.8	13.9	M10	3/8	HC 202-10	FL202	0.48
HCFL 203	17	3 57/64	3 1/64	19/32	7/16	31/32	29/64	2 1/4	1 33/64	1.0944	0.5472	M10	3/8	HC 203	FL203	0.48
HCFL 203-11	11/16	99	76.5	15	11	24.5	11.5	57	38.4	27.8	13.9	M10	3/8	HC 203-11	FL203	0.48
HCFL 204-12	20	4 7/16	3 57/64	19/32	15/32	1	15/32	2 3/8	1 23/32	1.3465	0.6732	M10	3/8	HC 204-12	FL204	0.73
HCFL 204	3/4	113	90	15	12	25.5	12	60	43.7	34.2	17.1	M10	3/8	HC 204	FL204	0.73
HCFL 205-14	25	5 1/8	3 57/64	5/8	9/16	1 1/16	5/8	2 11/16	1 3/4	1.3701	0.6850	M14	1/2	HC 205-14	FL205	0.8
HCFL 205-15	15/16	130	99	16	14	27	16	68	44.3	34.8	17.4	M14	1/2	HC 205-15	FL205	0.8
HCFL 205	1	130	99	16	14	27	16	68	44.3	34.8	17.4	M14</				



UKFL 200
normal-duty

SR type seal

带座轴承代号 Bearing Unit	轴径 Shaft Dia	外形尺寸 (英寸) 或 (毫米) Dimensions(in)or(mm)										螺栓 Bolt Used	轴承代号 Bearing	紧定套 Adapter Sleeve	座代号 Housing	重量 Weight
No.	d	a	e	i	g	l	s	b	z	s1		No.	No.	No.		
	(in.) (mm)	(mm) (in.)													(kg)	
UKFL 205+HE2305 205+H2305	3/4 20	5 1/8 130	3 57/64 99	5/8 16	9/16 14	1 1/16 27	5/8 16	2 11/16 68	25/64 35.5	0.7677 19.5	M14 1/2	UK 205	HE2305 H2305	FL205	0.6	
UKFL 206+HS2306 206+HA2306 206+H2306 206+HE2306	7/8 5/16 25	5 13/16 148	4 39/64 117	45/64 18	9/16 14	1 7/32 31	5/8 16	3 5/32 80	1 17/32 39	0.8268 21	M14 1/2	UK 206	HS2306 HE2306 H2306 HE2306	FL206	1.0	
UKFL 207+HS2307 207+H2307 207+HA2307	1 1/8 3/16 30	6 11/32 161	5 1/8 130	3/4 19	5/8 16	1 11/32 34	5/8 16	3 17/32 90	41/64 41.5	0.8858 22.5	M14 1/2	UK 207	HS2307 H2307 HA2307	FL207	1.3	
UKFL 208+HE2308 208+HS2308 208+H2308	1 1/4 3/8 35	6 7/8 175	5 43/64 144	53/64 21	5/8 16	1 13/32 36	5/8 16	3 5/16 100	51/64 45.5	0.9646 24.5	M14 1/2	UK 208	HE2308 HS2308 H2308	FL208	1.6	
UKFL 209+HA2309 209+HE2309 209+H2309	1 7/16 1 1/2 40	7 13/32 188	5 53/64 148	55/64 22	23/32 18	1 1/2 38	3/4 19	4 1/4 108	1 57/64 48	1.0236 26	M16 5/8	UK 209	HA2309 HE2309 H2309	FL209	2.0	
UKFL 210+HS2310 210+HA2310 210+HE2310 210+H2310	5/8 1 11/16 1 3/4 45	7 3/4 197	6 3/16 157	55/64 22	23/32 32	9/16 40	3/4 19	4 17/32 115	61/64 49.5	1.0827 27.5	M16 5/8	UK 210	HS2310 HA2310 HE2310 H2310	FL210	2.3	
UKFL 211+HS2311 211+HA2311 211+H2311 211+HE2311	1 7/8 1 15/16 2 50	8 13/16 224	7 1/4 184	63/64 25	25/32 20	1 11/16 43	3/4 19	5 1/8 130	2 7/64 53.5	1.1221 28.5	M16 5/8	UK 211	HS2311 HA2311 H2311 HS2311	FL211	3.3	
UKFL 212+HS2312 212+H2312	2 1/8 55	9 27/32 250	7 61/64 202	9/64 29	25/32 20	7/8 48	29/32 23	5 1/2 140	2 23/64 60	1.2205 31	M20 3/4	UK 212	HA2312 H2312	FL212	4.0	
UKFL 213+HA2313 213+HE2313 213+H2313 213+HS2313	2 3/16 2 1/4 2 3/8 60	10 5/32 258	8 17/64 210	3/16 30	15/16 24	1 31/32 50	29/32 23	6 3/32 155	3 31/64 63	1.2992 33	M20 3/4	UK 213	HA2313 HE2313 H2313 HS2313	FL213	5.1	
UKFL 215+HA2315 215+HE2315 215+H2315	2 7/16 2 1/2 65	10 13/16 275	8 55/64 225	1 13/32 34	15/16 24	2 13/64 56	29/32 23	6 1/2 165	2 47/64 69.5	1.3976 35.5	M20 3/4	UK 215	HA2315 HE2315 H2315	FL215	6.4	
UKFL 216+HA2316 216+HE2316 216+H2316	2 11/16 2 3/4 70	11 13/32 290	9 11/64 233	1 13/32 34	15/16 24	2 9/32 58	63/64 25	7 3/32 180	2 7/8 73	1.5354 39	M22 7/8	UK 216	HA2316 HE2316 H2316	FL216	8.0	
UKFL 217+HA2317 217+H2317 217+HE2317	2 15/16 3 75	12 9/16 305	9 49/64 248	27/64 36	1 1/32 26	2 15/32 63	63/64 25	7 15/32 190	3 1/32 77	1.6142 41	M22 7/8	UK 217	HA2317 H2317 HE2317	FL217		
UKFL 218+H2318	80	12 19/32 320	10 7/16 265	1 37/64 40	1 1/32 26	2 43/64 68	63/64 25	8 1/16 205	3 15/64 82	1.6535 42	M22 7/8	UK 218	H2318	FL218		

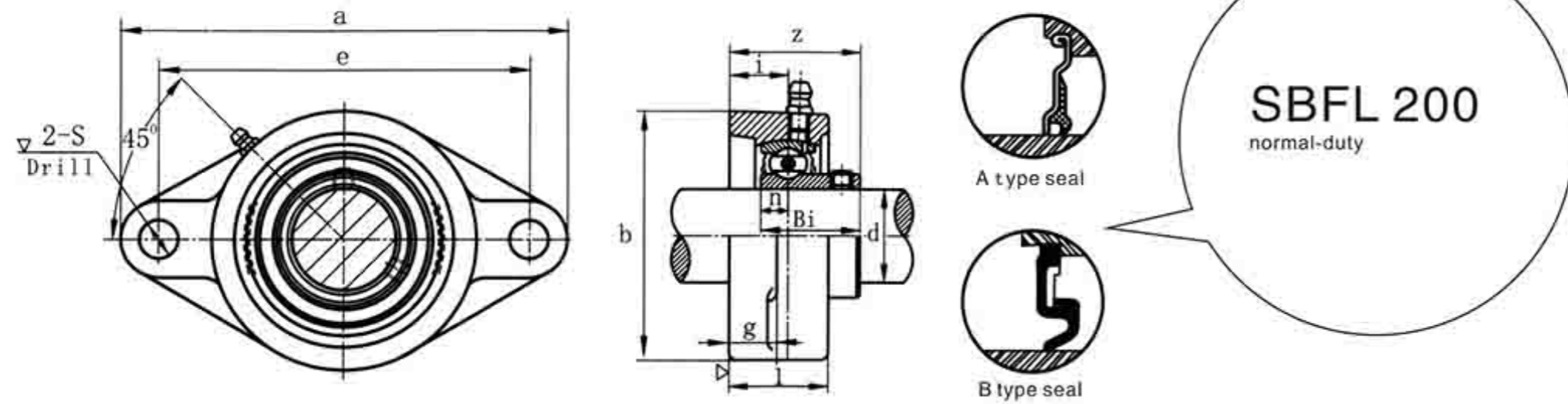


SAFL 200
normal-duty

B type seal

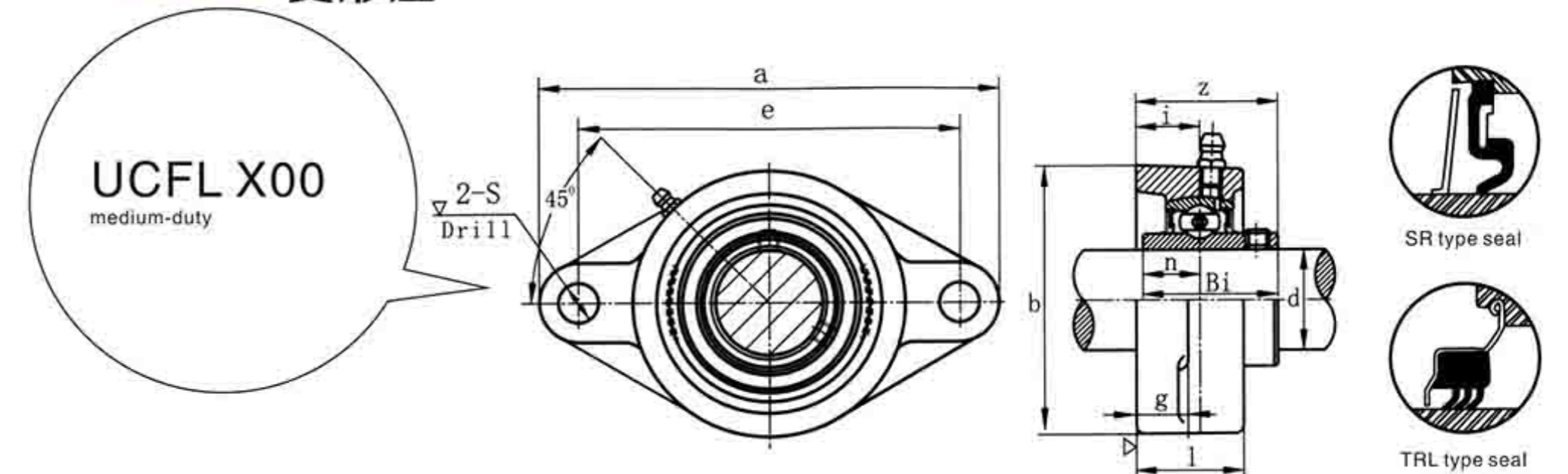
A type seal

带座轴承代号 Bearing Unit	轴径 Shaft Dia	外形尺寸 (英寸) 或 (毫米) Dimensions(in)or(mm)										螺栓 Bolt Used	轴承代号 Bearing	座代号 Housing	重量 Weight
No.	d	a	e	i	g	l	s	b	z	Bi	n		No.	No.	
	(in.) (mm)	(mm) (in.)													(kg)
SAFL 201 201-8	12 1/2	3 57/64 99	3 1/64 76.5	19/32 15	7/16 11	31/32 24.5	29/64 11.5	2 1/4 57	1 31/64 37.6	0.7520 19.1	0.2362 6.0	M10 3/8	SA 201 201-8	FI201	0.38
SAFL 202 202-10	15 5/8	3 57/64 99	3 1/64 76.5	19/32 15	7/16 11	31/32 24.5	29/64 11.5	2 1/4 57	1 31/64 37.6	0.7520 19.1	0.2362 6.0	M10 3/8	SA 202 202-10	FI202	0.38
SAFL 203 203-11	17 11/16	3 57/64 99	3 1/64 76.5	19/32 15	7/16 11	31/32 24.5	29/64 11.5	2 1/4 57	1 31/64 37.6	0.7520 19.1	0.2362 6.0	M10 3/8	SA 203 203-11	FI203	0.38
SAFL 204-12 204	3/4 20	4 7/16 113	3 35/64 90	19/32 15	15/32 12	1 25.5	15/32 12	2 3/8 60	1 33/64 38.4	0.8465 21.5	0.2756 7.0	M10 3/8	SA 204-12 204	FI204	0.39
SAFL 205-14 205-15 205-16	7/8 15/16 25	5 1/8 130	3 57/64 99	5/8 16	9/16 14	1 1/16 27	5/8 16	2 11/16 68	1 35/64 39.5	0.8465 21.5	0.2953 7.5	M14 1/2	SA 205-14 205-15 205-16	FI205	0.57
SAFL 206-18 206 206-19 206-20	1 1/8 3/16 1 1/4 30	5 13/16 148	4 39/64 117	45/64 18	9/16 14	1 7/32 31	5/8 16	3 5/32 80	1 49/64 44.7	0.9370 23.8	0.3150 8.0	M14 1/2	SA 206-18 206 206-19 206-20	FI206	0.83
SAFL 207-20 207-21 207-22 207 207-23	1 1/4 5/8 1 3/8 35	6 11/32 161	5 1/8 130	3/4 19	5/8 16	1 11/32 34	5/8 16	3 17/32 90	2 29/32 48.4	1.0000 25.4	0.3346 8.5	M14 1/2	SA 207-20 207-21 207-22 207 207-23	FI207	1.03
SAFL 208-24 208-25 208	1 1/2 1 9/16 40	6 7/8 175	5 43/64 144	53/64 21	5/8 16	1 13/32 36	5/8 16	3 15/16 100	2 7/64 53.7	1.1890 30.2	0.3543 9.0	M14 1/2	SA 208-24 208-25 208	FI208	1.30
SAFL 209-26 209-27 209-28 209	1 5/8 1 11/16 1 3/4 45	7 13/32 188	5 53/64 148	55/64 22	23/32 18	1 1/2 38	3/4 19	4 1/4 108	1 5/32 48.4	1.1890 30.2	0.3740 9.5	M16 5/8	SA 209-26 209-27 209-28 209	FI209	1.86
SAFL 210-30 210-31 210 210-32	1 7/8 1 15/16 50	7 3/4 197	6 3/16 157	55/64 22	23/32 18	9/16 40	3/4 19	4 17/32 115	2 5/32 54.7	1.1890 30.2	0.3937 10.0	M16 5/8	SA 210-30 210-31 210 210-32	FI210	2.17
SAFL 211-32 211-34 211 211-35	2 2 1/8 55	8 13/16 224	7 1/4 184	63/64 25	25/32 20	1 11/16 43	3/4 19	5 1/8 130	2 27/64 61.4	1.2756 32.4	0.4724 12	M16 5/8	SA 211-32 211-34 211 211-35	FI211	2.78
SAFL 212-36 212 212-38 212-39	2 1/4 60	9 27/32 250	7 81/64 202	9/64 29	25/32 20	7/8 48	29/32 23	5 1/2 140	2 39/64 66.3	1.3150 33.4	0.4724 12	M20 3/4	SA 212-36 212 212-38 212-39	FI212	3.66



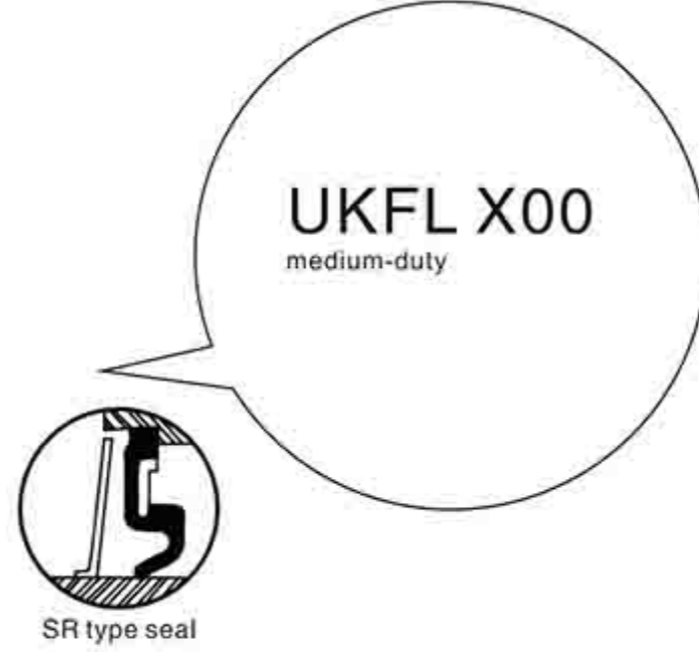
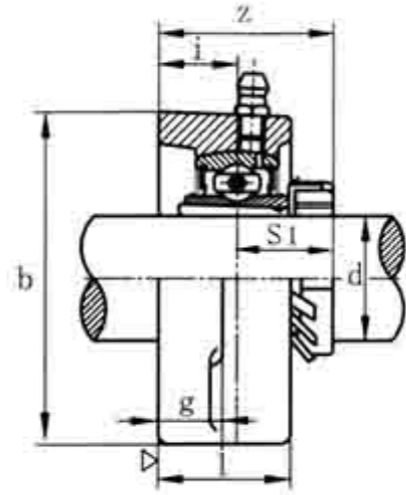
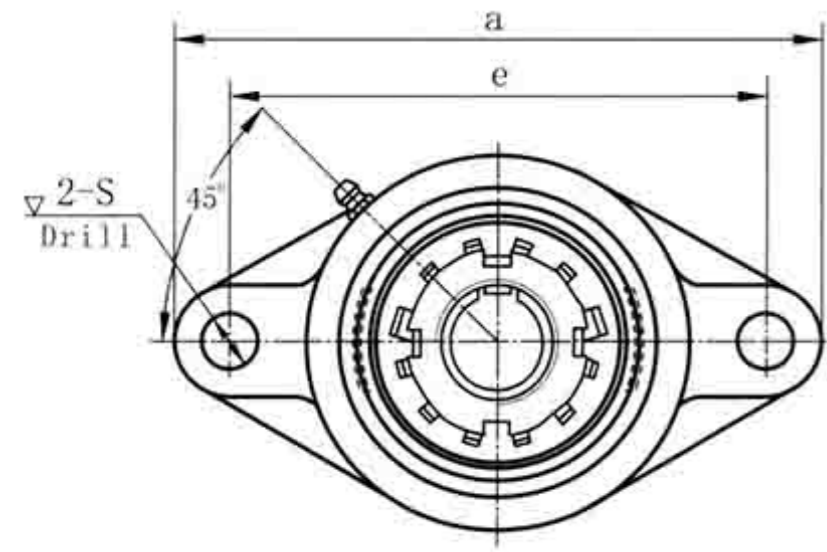
SBFL 200
normal-duty

带座轴承代号 Bearing Unit	轴径 Shaft Dia	外形尺寸 (英寸) 或 (毫米) Dimensions (in.) or (mm)											螺栓 Bolt Used	轴承代号 Bearing	座代号 Housing	重量 Weight
No.	d	a	e	i	g	l	s	b	z	Bi	n			No.	No.	(kg)
	(in.) (mm)												(mm) (in.)			
SBFL 201	12	3 ^{57/64}	3 ^{1/64}	19/32	7/16	31/32	29/64	2 ^{1/4}	1 ^{7/32}	0.8661	0.2362	M10	3/8	SB 201	FL201	0.38
201-8	1/2	99	76.5	15	11	24.5	11.5	57	31	22	6.0			201-8		
SBFL 202	15	3 ^{57/64}	3 ^{1/64}	19/32	7/16	31/32	29/64	2 ^{1/4}	1 ^{7/32}	0.8661	0.2362	M10	3/8	SB 202	FL202	0.38
202-10	5/8	99	76.5	15	11	24.5	11.5	57	31	22	6.0			202-10		
SBFL 203	17	3 ^{57/64}	3 ^{1/64}	19/32	7/16	31/32	29/64	2 ^{1/4}	1 ^{7/32}	0.8661	0.2362	M10	3/8	SB 203	FL203	0.38
203-11	1 ^{1/16}	99	76.5	15	11	24.5	11.5	57	31	22	6.0			203-11		
SBFL 204-12	3/4	4 ^{7/16}	3 ^{35/64}	19/32	15/32	1	15/32	2 ^{3/8}	1 ^{19/64}	0.9843	0.2756	M10	3/8	SB 204-12	FL204	0.39
204	20	113	90	15	12	25.5	12	60	33.0	25	7.0			204		
SBFL 205-14	7/8													SB 205-14		
205-15	15/16	5 ^{1/8}	3 ^{57/64}	5/8	9/16	1 ^{1/16}	5/8	2 ^{11/16}	1 ^{25/64}	1.0630	0.2953	M14	1/2	205-15	FL205	0.57
205	25	130	99	16	14	27	16	68	35.5	27	7.5			205		
205-16	1													205-16		
SBFL 206-18	1 ^{1/8}													SB 206-18		
206	30	5 ^{13/16}	4 ^{39/64}	4 ^{5/64}	9/16	1 ^{7/32}	5/8	3 ^{5/32}	1 ^{37/64}	1 2/11	0.3150	M14	1/2	206	FL206	0.83
206-19	1 ^{3/16}	148	117	18	14	31	16	80	40	30	8.0			206-19		
206-20	1 ^{1/4}													206-20		
SBFL 207-20	1 ^{1/4}													SB 207-20		
207-21	1 ^{5/16}	6 ^{1/32}	5 ^{1/8}	3/4	5/8	1 ^{11/32}	5/8	3 ^{17/32}	1 ^{43/64}	1.2598	0.3346	M14	1/2	207-21	FL207	1.03
207-22	1 ^{3/8}													207-22		
207	35	161	130	19	16	34	16	90	42.5	32	8.5			207		
207-23	1 ^{7/16}													207-23		
SBFL 208-24	1 ^{1/2}	6 ^{7/8}	5 ^{43/64}	5 ^{3/64}	5/8	1 ^{13/32}	5/8	3 ^{15/16}	2 ^{13/16}	1.3386	0.3543	M14	1/2	SB 208-24	FL208	1.30
208-25	1 ^{9/16}	175	144	21	16	36	16	100	46	34	9.0			208-25		
208	40													208		
SBFL 209-26	1 ^{5/8}													SB 209-26		
209-27	1 ^{11/16}	7 ^{13/32}	5 ^{53/64}	5 ^{5/64}	23/32	1 ^{1/2}	3/4	4 ^{1/4}	2 ^{3/32}	1.6220	0.3740	M16	5/8	209-27	FL209	1.97
209-28	1 ^{3/4}	188	148	22	18	38	19	108	53	41.2	9.5			209-28		
209	45													209		
SBFL 210-30	1 ^{7/8}													SB 210-30		
210-31	1 ^{15/16}	7 ^{3/4}	6 ^{3/16}	5 ^{5/64}	23/32	1 ^{9/16}	3/4	4 ^{17/32}	2 ^{5/32}	1.6378	0.3937	M16	5/8	210-31	FL210	2.18
210	50	197	157	22	18	40	19	115	54.6	41.6	10.0			210		
210-32	2													210-32		
SBFL 211-32	2													SB 211-32		
211-34	2 ^{1/8}	8 ^{13/16}	7 ^{1/4}	6 ^{3/64}	25/32	1 ^{11/16}	3/4	5 ^{1/8}	2 ^{19/64}	1.7835	0.4646	M16	5/8	211-34	FL211	3.04
211	55	224	184	25	20	43	19	130	58.5	45.3	11.8			211		
211-35	2 ^{3/16}													211-35		
SBFL 212-36	2 ^{1/4}													SB 212-36		
212	60	9 ^{27/32}	7 ^{61/64}	1 ^{9/64}	25/32	1 ^{7/8}	29/32	5 ^{1/2}	2 ^{43/64}	2.1142	0.5866	M20	5/8	212	FL212	3.76
212-38	2 ^{3/8}	250	202	29	20	48	23	140	67.8	53.7	14.9			212-38		
212-39	2 ^{7/16}													212-39		



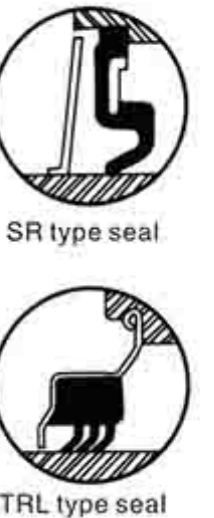
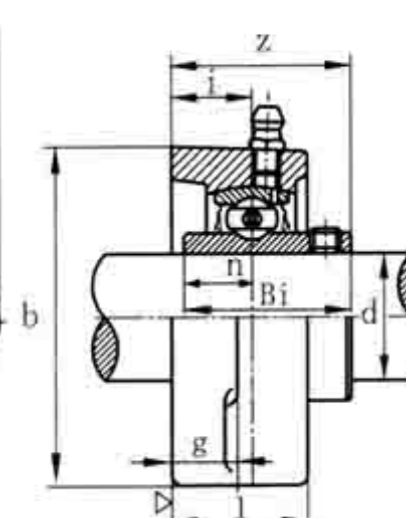
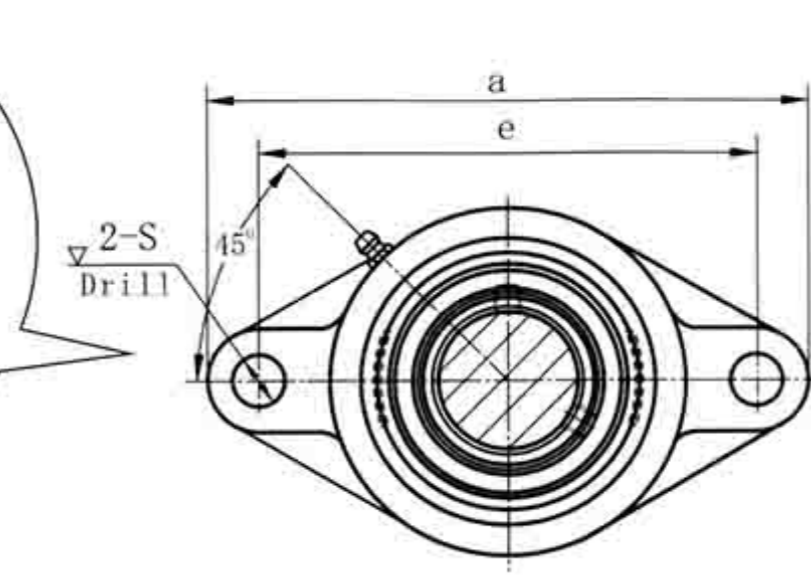
UCFL X00
medium-duty

带座轴承代号 Bearing Unit	轴径 Shaft Dia	外形尺寸 (英寸) 或 (毫米) Dimensions (in.) or (mm)											螺栓 Bolt Used	轴承代号 Bearing	座代号 Housing	重量 Weight
No.	d	a	e	i	g	l	s	b	z	Bi	n			No.	No.	(kg)
	(in.) (mm)												(mm) (in.)			
UCFL X05	25													UC X05		
X05-14	7/8	5 ^{9/16}	4 ^{39/64}	4 ^{5/64}	1/2	1 ^{3/16}	15/32	3 ^{9/32}	1 ^{19/32}	1.5000	0.6260	M10	3/8	X05-14	FL X05	1.0
X05-16	1	141	117	18	13	30	12	83	40.2	38.1	15.9			X05-16		
UCFL X06	30													UC X06		
X06-18	1 ^{1/16}	6 ^{5/32}	5 ^{1/8}	3/4	9/16	1 ^{11/32}	5/8	3 ^{3/4}	1 ^{3/4}	1.6890	0.6890	M14	1/2	X06-18	FL X06	1.4
X06-19	1 ^{3/16}	155	130	19	14	34	16	95	44.4	42.9	17.5			X06-19		
X06-20	1 ^{1/4}													X06-20		
UCFL X07-20	1 ^{1/4}													UC X07-20		
X07-22	1 ^{3/8}	6 ^{23/32}	5 ^{43/64}	5 ^{3/64}	9/16	1 ^{1/2}	5/8	4 ^{1/8}	2 ^{1/32}	1.9370	0.7480	M14	1/2	X07-22	FL X07	1.9
X07	35	171	144	21	14	38	16	105	51.2	49.2	19.0			X07		
X07-23	1 ^{7/16}													X07-23		
UCFL X08-24	1 ^{1/2}	7 ^{1/16}	5 ^{53/64}	5 ^{5/64}	9/16	1 ^{9/16}	5/8	4 ^{3/8}	2 ^{1/16}	1.9370	0.7480	M14	1/2	UC X08-24	FL X08	2.0
X08	40	179	148	22	14	40	16	111	52.2	49.2	19.0			X08		
UCFL X09-26	1 ^{5/8}													UC X09-26		
X09-27	1 ^{11/16}	7 ^{7/16}	6 ^{3/16}	2 ^{9/32}	9/16	1 ^{9/16}	5/8	4 ^{9/16}	2 ^{3/16}	2.0315	0.7480	M14	1/2	X09-27	FL X09	2.4
X09-28	1 ^{3/4}	189	157	23	14	40	16	116	55.6	51.6	19.0			X09-28		
X09	45													X09		
UCFL X10-31	1 ^{5/16}													UC X10-31		
X10	50	8 ^{1/2}	7 ^{1/4}	1 ^{1/32}	2 ^{5/32}	1 ^{23/32}	3/4	5 ^{1/4}	2 ^{11/32}	2.1890	0.8740	M16	5/8	X10	FL X10	3.7
X10-32	2	216	184	26	20	44	19	133	59.4	55.6	22.2			X10-32		



SR type seal

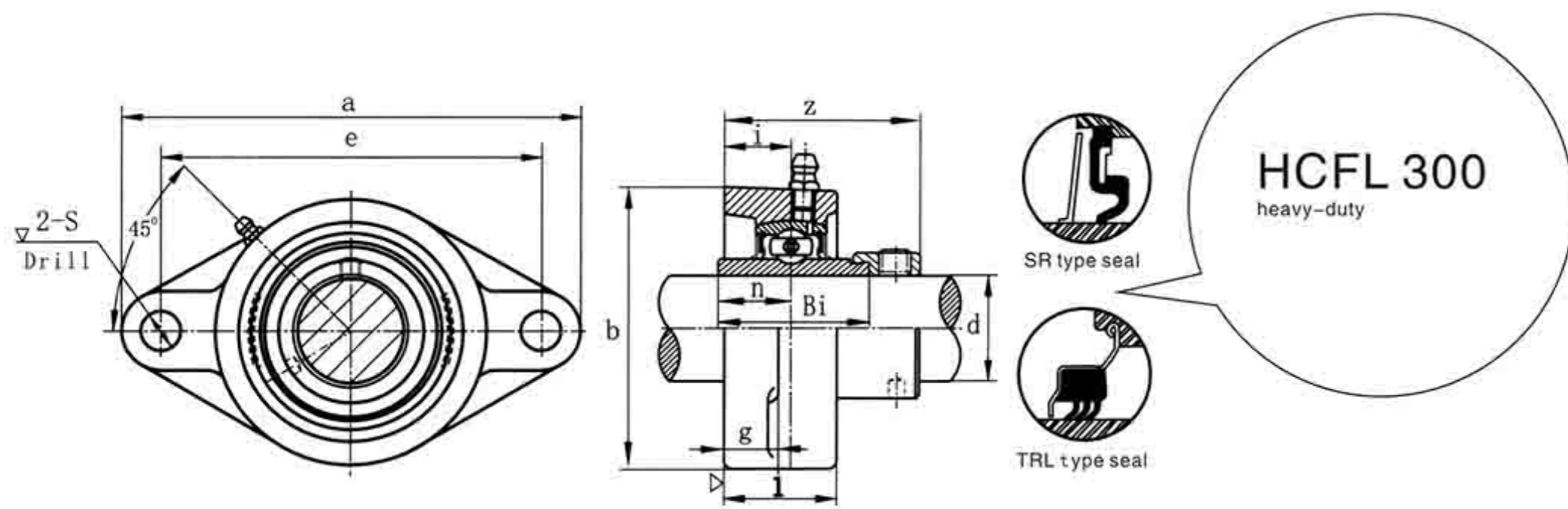
带座轴承代号 Bearing Unit	轴径 Shaft Dia	外形尺寸 (英寸) 或 (毫米) Dimensions (in.) or (mm)										螺栓 Bolt Used	轴承代号 Bearing	紧定套 Adaper sleeve	座代号 Housing	重量 Weight	
No.	d	a	e	i	g	l	s	b	z	Sl		No.	No.	No.		(kg)	
UKFL X05+HE2305	3/4	59/16	439/64	45/64	1/2	13/16	15/32	39/32	17/32	0.8268		M10	3/8	UK X05	He2305	FL X05	1.0
X05+H2305	20	141	117	18	13	30	12	83	39	21					H2305		
UKFL X06+HS2306	7/8														HS2306		
X06+HA2306	15/16	65/32	51/8	3/4	9/16	111/32	5/8	119/32	33/4	0.8465		M14	1/2	UK X06	HA2306	FL X06	1.5
X06+H2306	25	155	130	19	14	34	16	40.5	95	21.5					H2306		
X06+HE2306	1														HE2306		
UKFL X07+HS2307	1 1/8														HS2307		
X07+H2307	30	623/32	543/64	53/64	9/16	1 1/2	5/8	4 1/8	1 3/4	0.9252		M14	1/2	UK X07	H2307	FL X07	1.9
X07+HA2307	13/16	171	144	21	14	38	16	105	44.5	23.5					HA2307		
UKFL X08+HE2308	1 1/4														HE2308		
X08+HS2308	33/8	71/16	553/64	55/64	9/16	1 9/16	5/8	4 3/8	127/32	0.9843		M14	1/2	UK X08	HS2308	FL X08	2.1
X08+H2308	35	179	148	22	14	40	16	111	47	25					H2308		
UKFL X09+HA2309	1 7/16														HA2309		
X09+HE2309	1 1/2	77/16	63/16	29/32	9/16	1 9/16	5/8	4 9/16	1 61/64	1.0433		M14	1/2	UK X09	HE2309	FL X09	2.4
X09+H2309	40	189	157	23	14	40	16	116	49.5	26.5					H2309		
UKFL X10+HS2310	1 5/8														HS2310		
X10+HA2310	1 11/16	8 1/2	7 1/4	1 1/32	25/32	1 23/32	3/4	5 1/4	2 9/64	1.1220		M14	5/8	UK X10	HA2310	FL X10	3.6
X10+HE2310	1 3/4	216	184	26	20	44	19	133	54.5	28.5					HE2310		
X10+H2310	45														H2310		



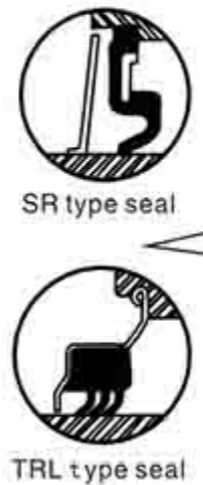
SR type seal

TRL type seal

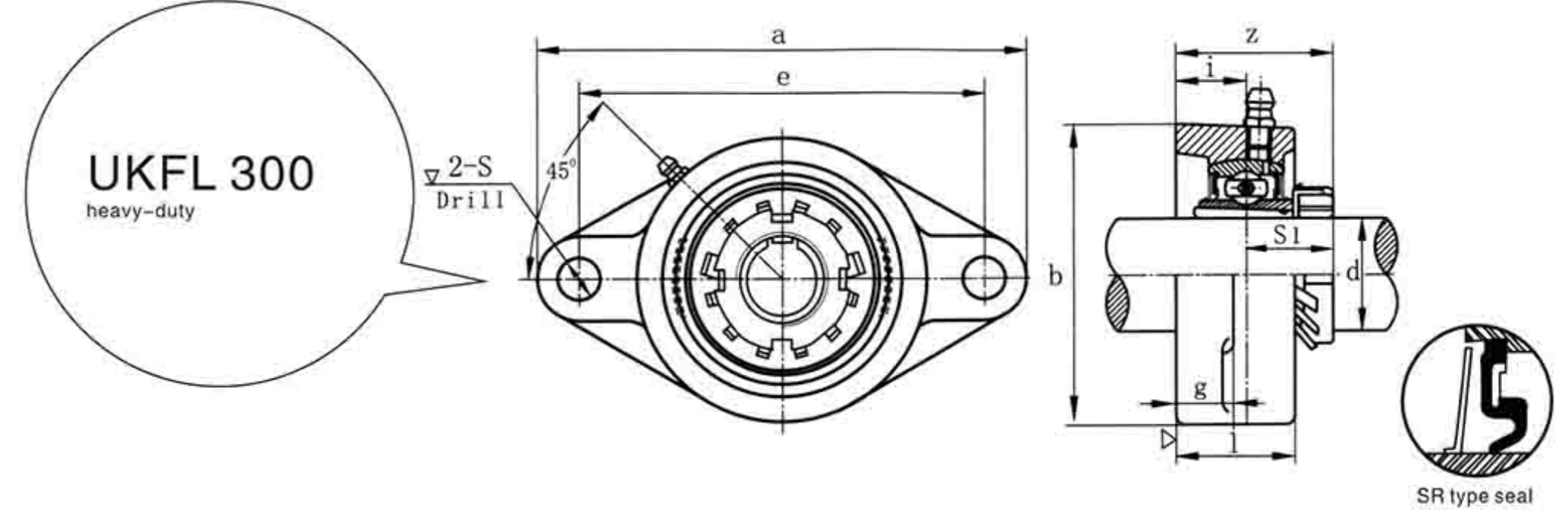
带座轴承代号 Bearing Unit	轴径 Shaft Dia	外形尺寸 (英寸) 或 (毫米) Dimensions (in.) or (mm)										螺栓 Bolt Used	轴承代号 Bearing	座代号 Housing	重量 Weight	
No.	d	a	e	i	g	l	s	b	z	Bl	n	No.	No.		(kg)	
UCFL 305	25	529/32	429/64	5/8	1/2	15/32	3/4	35/32	17/32	1.4961	0.5906	M16	3/8	UC 305	FL305	1.1
305-16	1	150	113	16	13	29	19	80	39	38	15			305-16		
UCFL 306-18	1 1/8	73/32	59/32	45/64	19/32	1 1/4	29/32	317/32	123/32	1.6929	0.6693	M20	3/4	UC 306-18	FL306	1.5
306	30	180	134	18	15	32	23	90	44	43	17			306		
306-20	1 1/4													306-20		
UCFL 307-20	1 1/4	79/32	535/64	25/32	5/8	1 13/32	29/32	315/16	115/16	1.8897	0.7480	M20	3/4	UC 307-20	FL307	1.8
307-22	35	185	141	20	16	36	23	100	49	48	19			307-22		
307	185													307		
307-23	1 7/16													307-23		
UCFL 308-24	1 1/2	77/8	67/32	29/32	21/32	1 9/16	29/32	413/32	27/32	2.0472	0.7480	M20	3/4	UC 308-24	FL308	2.4
308	40	200	158	23	17	40	23	112	56	52	19			308		
UCFL 309-28	1 3/4	91/16	631/32	63/64	23/32	1 23/32	63/64	429/32	23/8	2.2441	0.8661	M22	7/8	UC 309-28	FL309	3.4
309	230	177	25	18	44	25	125	60	57	22				309		
UCFL 310-31	1 5/16	97/16	723/64	17/64	3/4	1 7/8	63/64	5 1/2	2 5/8	2.4015	0.8661	M22	7/8	UC 310-31	FL310	4.3
310	50	240	187	28	19	48	25	140	67	61	22			310		
310-32	2													310-32		
UCFL 311-32	2	927/32	751/64	13/16	25/32	2 1/16	63/64	5 19/32	2 25/32	2.5984	0.9842	M22	7/8	UC 311-32	FL311	5.2
311	55	250	198	30	20	52	25	150	71	66	25			311		
UCFL 312	60	105/8	811/32	119/64	7/8	2 7/32	1 7/32	65/16	3 1/16	2.7953	1.0236	M27	1	UC 312	FL312	6.3
312-36	2 1/4	270	212	33	22	56	31	160	78	71	26			312-36		
UCFL 313-40	2 1/2	115/8	929/64	119/64	1	2 9/32	1 7/32	67/8	3 1/16	2.9528	1.1811	M27	1	UC 313-40	FL313	7.9
313	65	295	240	33	25	58	31	175	78	75	30			313		
UCFL 314-44	2 3/4	1213/32	927/32	127/64	1 3/32	2 13/32	1 3/8	79/32	3 3/16	3.0709	1.2992	M30	1 1/8	UC 314-44	FL314	9.3
314	70	215	250	36	28	61	35	185	81	78	33			314		
UCFL 315	75	1219/32	1015/64	117/32	1 3/16	2 19/32	1 3/8	711/16	3 1/2	3.2283	1.2598	M30	1 1/8	UC 315	FL315	10.6
315-48	3	320	260	39	30	66	35	195	89	82	32			315-48		
UCFL 316	80	1331/32	117/32	1 1/2	1 1/4	2 11/16	1 1/2	89/32	3 17/32	3.3858	1.3386	M33	1 1/4	UC 316	FL316	13.5
316-50	3 1/8	355	285	38	32	68	38	210	90	86	34			316-50		
UCFL 317	85	149/16	1113/16	147/64	1 1/4	2 29/32	1 1/2	821/32	3 15/16	3.7795	1.5087	M33	1 1/4	UC 317	FL317	15.2
317-52	3 1/4	370	300	44	32	74	38	220	100	96	40			317-52		
UCFL 318-56	3 1/2	155/32	1213/32	147/64	1 13/32	3	1 1/2	91/4	3 15/16	3.7795	1.5748	M33	1 1/4	UC 318-56	FL318	18.0
318	90	385	315	44	36	76	38	235	100	96	40			318		
UCFL 319	95	1515/16	13	2 21/64	1 9/16	3 11/16	1 39/64	927/32	4 3/4	4.0551	1.6142	M36	1 3/8	UC 319	FL319	22.7
	405	330	59	40	94	41	250	121	103	41						
UCFL 320	100	175/16	1411/64	221/64	1 9/16	3 11/16	1 47/64	105/8	4 29/32	4.2519	1.6535	M39	1 1/2	UC 320	FL320	27.2
320-64	4	440	360	59	40	94	44	270	125	108	42			320-64		
UCFL 322	110	181/2	1523/64	223/64	1 21/32	3 25/32	1 47/64	1113/16	5 5/32	4.6063	1.8110	M39	1 1/2	UC 322	FL322	34.2
	470	390	60	42	96	44	300	131	117	46						
UCFL 324	120	2015/32	1659/64	29/16	1 7/8	4 11/32	1 27/32	13	5 1/2	4.9606	2.0079	M42	1 5/8	UC 324	FL324	48.1
	520	430	65	48	110	47	330	140	126	51						
UCFL 326	130	2121/32	187/64	29/16	1 31/32	4 17/32	1 27/32	143/16	5 3/4	5.3150	2.1260	M42	1 5/8	UC 326	FL326	59.5
	550	460	65	50	115	47	360	146	135	54						
UCFL 328	140	235/8	1911/16	281/64	2 3/8	4 29/32	2	153/4	6 11/32	5.7086	2.3228	M45	1 5/8	UC 328	FL328	73.5
	600	500	75	60	125	51	400	161	145	59						



HCFL 300 heavy-duty



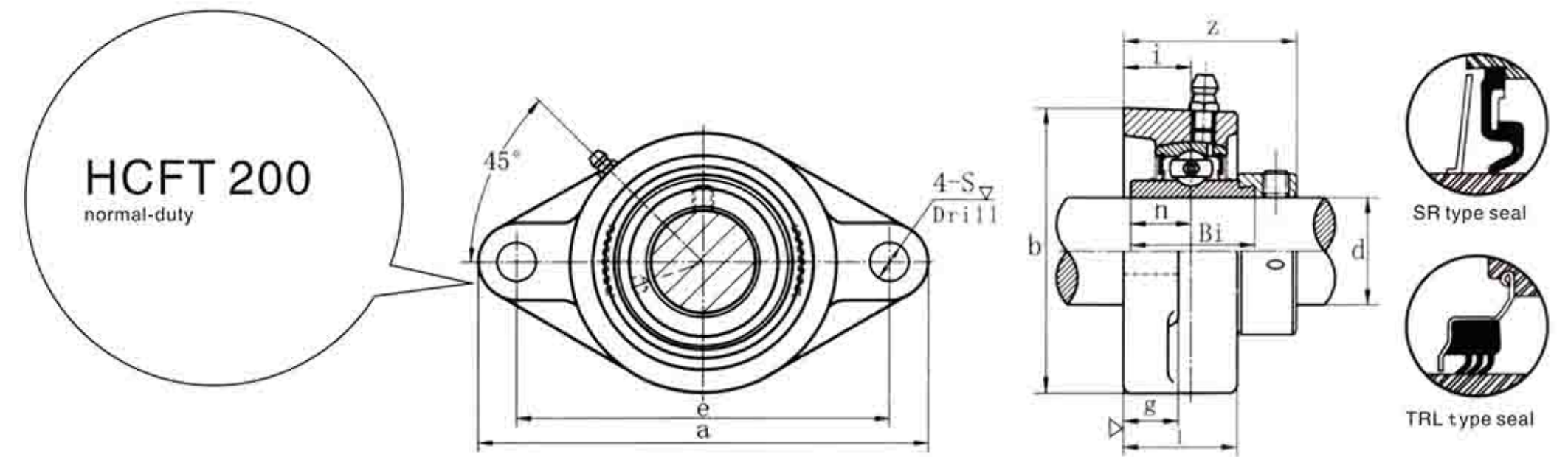
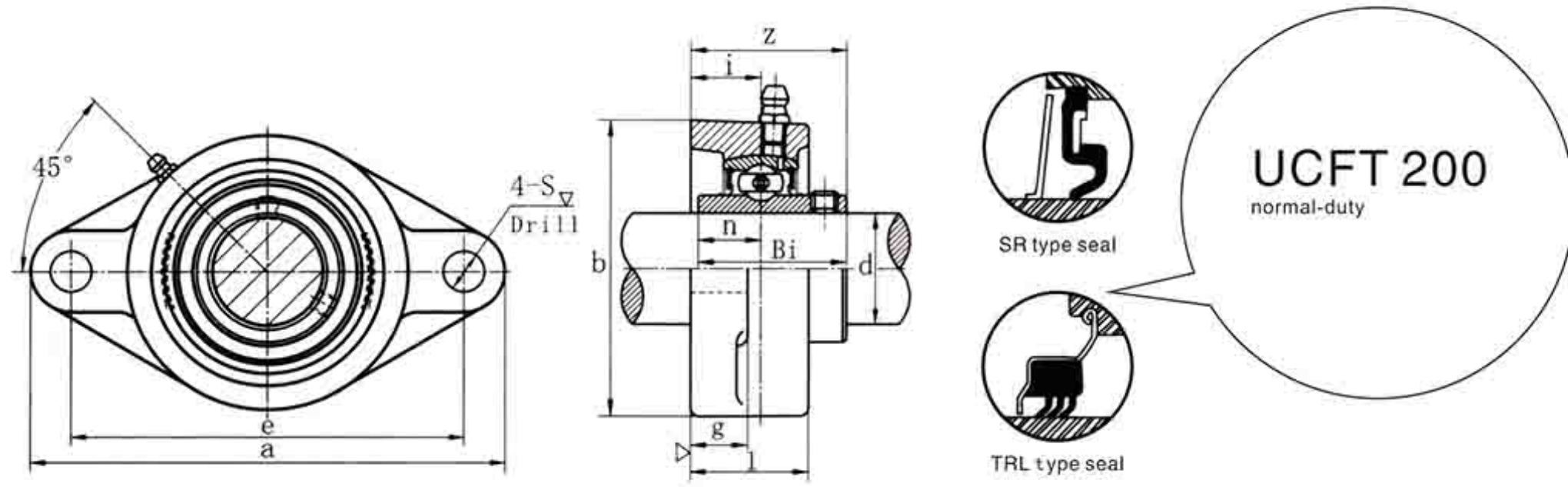
带座轴承代号 Bearing Unit	轴径 Shaft Dia	外形尺寸 (英寸) 或 (毫米) Dimensions (in.) or (mm)											螺栓 Bolt Used	轴承代号 Bearing	座代号 Housing	重量 Weight	
No.	d	a	e	i	g	l	s	b	z	Bi	n			No.	No.	(kg)	
(in.) (mm)																	
HCFL 305 305-16	1	25 150	5 ²⁹ / ₃₂ 113	4 ²⁹ / ₆₄ 16	5/8 13	1 ⁵ / ₃₂ 29	3/4 19	3 ⁵ / ₃₂ 80	1 ¹³ / ₁₆ 46.1	1.3740 34.9	0.6575 16.7			M16	5/8 HC 305 305-16	FI305	1.1
HCFL 306-18 306 306-20	1 ¹ / ₈ 30 1 ¹ / ₄	7 ³ / ₃₂ 180	5 ⁹ / ₃₂ 134	45/64 18	19/32 15	1 ¹ / ₄ 32	29/32 23	3 ¹⁷ / ₃₂ 90	1 ⁶³ / ₆₄ 50.5	1.4370 36.4	0.6890 17.5			M20	3/4 HC 306-18 306 306-20	FL306	1.6
HCFL 307-20 307-22 307 307-23	1 ¹ / ₄ 1 ³ / ₈ 35 1 ⁷ / ₁₆	7 ⁹ / ₃₂ 185	5 ³⁵ / ₆₄ 141	25/32 20	5/8 16	1 ¹³ / ₃₂ 36	29/32 23	3 ¹⁵ / ₁₆ 100	1 ³ / ₃₂ 53.3	1.5000 38.1	0.7205 18.3			M20	3/4 HC 307-20 307-22 307 307-23	FL307	2.0
HCFL 308-24 308	1 ¹ / ₂ 40	7 ⁷ / ₈ 200	6 ⁷ / ₃₂ 158	29/32 23	21/32 17	1 ⁹ / ₁₆ 40	29/32 23	4 ¹³ / ₃₂ 112	2 ³ / ₈ 60.3	1.6260 41.3	0.7795 19.8			M20	3/4 HC 308-24 308	FL308	2.6
HCFL 309-28 309	1 ³ / ₄ 230	9 ¹ / ₁₆ 177	6 ³¹ / ₃₂ 177	63/64 25	23/32 18	1 ²³ / ₃₂ 44	63/64 25	4 ²⁹ / ₃₂ 125	2 ³³ / ₆₄ 63.9	1.6890 42.9	0.7795 19.8			M22	7/8 HC 309-28 309	FL309	3.6
HCFL 310-31 310 310-32	1 ¹⁵ / ₁₆ 50 2	9 ⁷ / ₁₆ 240	7 ²³ / ₆₄ 187	1 ⁷ / ₆₄ 28	3/4 19	1 ⁷ / ₈ 48	63/64 25	5 ¹ / ₂ 140	2 ³ / ₄ 70	1.9370 49.2	0.9685 24.6			M22	7/8 HC 310-31 310 310-32	FL310	4.6
HCFL 311-32 311	2 55	9 ²⁷ / ₃₂ 250	7 ⁵¹ / ₆₄ 198	1 ³ / ₁₆ 30	25/32 20	2 ¹ / ₁₆ 52	63/64 25	5 ²⁹ / ₃₂ 150	2 ³¹ / ₃₂ 75.2	2.1890 55.6	1.0945 27.8			M22	7/8 HC 311-32 311	FL311	5.3
HCFL 312 312-36	2 ¹ / ₄ 270	10 ⁵ / ₈ 212	8 ¹¹ / ₃₂ 212	1 ¹⁹ / ₆₄ 33	7/8 22	2 ⁷ / ₃₂ 56	1 ⁷ / ₃₂ 31	6 ⁵ / ₁₆ 160	5 ⁵ / ₃₂ 80	2.4370 61.9	1.2185 30.95			M27	1 HC 312 312-36	FL312	6.4
HCFL 313-40 313	1 ¹ / ₂ 65	11 ⁵ / ₈ 295	9 ²⁹ / ₆₄ 240	1 ¹⁹ / ₆₄ 33	1 25	2 ⁹ / ₃₂ 58	1 ⁷ / ₃₂ 31	6 ⁷ / ₈ 175	3 ²⁵ / ₆₄ 86.2	2.5630 65.1	1.2795 32.5			M27	1 HC 313-40 313	FL313	8.2
HCFL 314-44 314	2 ³ / ₄ 70	12 ¹³ / ₃₂ 315	9 ²⁷ / ₃₂ 250	1 ²⁷ / ₆₄ 36	1 ³ / ₃₂ 28	2 ¹³ / ₃₂ 61	1 ³ / ₈ 35	7 ⁹ / ₃₂ 185	3 ⁴⁵ / ₆₄ 93.95	2.6890 68.3	1.3445 34.15			M30	1 ¹ / ₈ HC 314-44 314	FL314	9.5
HCFL 315 315-48	75 3	12 ¹⁹ / ₃₂ 320	10 ¹⁵ / ₆₄ 260	1 ¹⁷ / ₃₂ 39	1 ³ / ₁₆ 30	2 ¹⁹ / ₃₂ 66	1 ³ / ₈ 35	7 ¹¹ / ₁₆ 195	4 101.7	2.9370 74.6	1.4685 37.3			M30	1 ¹ / ₈ HC 315 315-48	FL315	11
HCFL 316 316-50	80 3 ¹ / ₈	13 ³¹ / ₃₂ 355	11 ⁷ / ₃₂ 285	1 ¹ / ₂ 38	1 ¹ / ₄ 32	2 ¹¹ / ₁₆ 68	1 ¹ / ₂ 38	8 ⁹ / ₃₂ 210	4 ³ / ₃₂ 103.9	3.1890 81	1.5945 40.5			M33	1 ¹ / ₄ HC 316 316-50	FL316	14
HCFL 317 317-52	85 3 ¹ / ₄	14 ⁹ / ₁₆ 370	11 ¹³ / ₁₆ 300	1 ⁴⁷ / ₆₄ 44	1 ¹ / ₄ 32	2 ²⁹ / ₃₂ 74	1 ¹ / ₂ 38	8 ²¹ / ₃₂ 220	4 ²⁵ / ₆₄ 111.5	3.3110 84.1	1.1726 42			M33	1 ¹ / ₄ HC 317 317-52	FL317	15.9
HCFL 318-56 318	3 ¹ / ₂ 90	15 ⁵ / ₃₂ 385	12 ¹³ / ₃₂ 315	1 ⁴⁷ / ₆₄ 44	1 ¹³ / ₃₂ 36	3 76	1 ¹ / ₂ 38	9 ¹ / ₄ 235	4 ³⁷ / ₆₄ 116.3	3.4370 87.3	1.7165 43.6			M33	1 ¹ / ₄ HC 318-56 318	FL318	18.8
HCFL 319	95	15 ¹⁵ / ₁₆ 405	13 330	2 ²¹ / ₆₄ 59	1 ⁹ / ₁₆ 40	3 ¹¹ / ₁₆ 94	41	1 ³⁹ / ₆₄ 250	9 ²⁷ / ₃₂ 134.5	3.6890 93.7	1.8425 46.8			M36	1 ³ / ₈ HC 319 319	FL319	23.5
HCFL 320 320-64	100 4	17 ⁵ / ₁₆ 440	14 ¹¹ / ₆₄ 360	2 ²¹ / ₆₄ 59	1 ⁹ / ₁₆ 40	3 ¹¹ / ₁₆ 94	44	1 ⁴⁷ / ₆₄ 105	5 ²⁷ / ₆₄ 137.6	3.9370 100	1.9685 50			M39	1 ¹ / ₂ HC 320 320-64	FI320	28.7



UKFL 300 heavy-duty



带座轴承代号 Bearing Unit	轴径 Shaft Dia	外形尺寸 (英寸) 或 (毫米) Dimensions (in.) or (mm)											螺栓 Bolt Used	紧定套 Adapter sleeve	轴承代号 Bearing	座代号 Housing	重量 Weight
No.	d	a	e	i	g	l	s	b	z	S1			No.	No.	No.	(kg)	
(in.) (mm)																	
UKFL 305+HE2305 305+H2305	1 20	5 ²⁹ / ₃₂ 150	4 ²⁹ / ₆₄ 113	5/8 16	1/2 13	1 ⁵ / ₃₂ 29	3/4 19	3 ⁵ / ₃₂ 80	1 ¹⁵ / ₃₂ 37.5	0.8464 21.5			M16	5/8 HE2305 H2305	UK 305	FI305	1.5
UKFL 306+HS2306 306+HA2306 306+H2306 306+HE2306	1 ¹ / ₈ 15 15 1	7 ³ / ₃₂ 180	5 ⁹ / ₃₂ 134	45/64 18	19/32 15	1 ¹ / ₄ 32	29/32 23	3 ¹⁷ / ₃₂ 90	1 ³⁹ / ₆₄ 41	0.9055 23			M20	3/4 HS2306 HA2306 H2306 HE2306	UK 306	FL306	2.0
UKFL 307+HS2307 307+H2307 307+HA2307	1 ¹ / ₈ 30 1 ³ / ₁₆	7 ⁹ / ₃₂ 185	5 ³⁵ / ₆₄ 141	25/32 20	5/8 16	1 ¹³ / ₃₂ 36	29/32 23	3 ¹⁵ / ₁₆ 100	1 ⁵¹ / ₆₄ 45.5	1.0039 25.5			M20	3/4 HS2307 H2307 HA2307	UK 307	FL307	2.4
UKFL 308+HE2308 308+HS2308 308+H2308	1 ¹ / ₄ 1 ³ / ₈ 35	7 ⁷ / ₈ 200	6 ⁷ / ₃₂ 158	29/32 23	21/32 17	1 ⁹ / ₁₆ 40	29/32 23	4 ¹³ / ₃₂ 112	1 ⁶³ / ₆₄ 50.5	1.0827 27.5			M20	3/4 HE2308 HS2308 H2308	UK 308	FL308	3.0
UKFL 309+HA2309 309+HE2309 309+H2309	1 ⁷ / ₁₆ 1 ¹ / ₂ 40	9 ¹ / ₁₆ 230	6 ³¹ / ₃₂ 177	63/64 25	23/32 18	1 ²³ / ₃₂ 44	63/64 25	4 ²⁹ / ₃₂ 125	2 ¹¹ / ₆₄ 55	1.1811 30			M22	7/8 HA2309 HE2309 H2309	UK 309	FL309	4.3
UKFL 310+HS2310 310+HA2310 310+HE2310 310+H2310	1 ⁵ / ₈ 1 ¹¹ / ₁₆ 1 ³ / ₄ 45	9 ⁷ / ₁₆ 240	7 ²³ / ₆₄ 187	1 ⁷ / ₆₄ 28	3/4 19	1 ⁷ / ₈ 48	63/64 25	5 ¹ / ₂ 140	2 ²³ / ₆₄ 60	1.2598 32			M22	7/8 HS2310 HA2310 HE2310 H2310	UK 310	FL310	5.5
UKFL 311+HS2311 311+HA2311 311+H2311 311+HE2311	1 ⁷ / ₈ 1 ¹⁵ / ₁₆ 50 2	9 ²⁷ / ₃₂ 250	7 ⁵¹ / ₆₄ 198	1 ³ / ₁₆ 30	25/32 20	2 ¹ / ₁₆ 52	63/64 25	5 ²⁹ / ₃₂ 150	2 ¹ / ₂ 63.5	1.3189 33.5			M22	7/8 HS2311 HA2311 H2311 HE2311	UK 311	FL311	6.1
UKFL 312+HS2312 312+H2312	2 ¹ / ₈ 55	10 ⁵ / ₈ 270	8 ¹¹ / ₃₂ 212	1 ¹⁹ / ₆₄ 33	7/8 22	2 ⁷ / ₃₂ 56	1 ⁷ / ₃₂ 31	6 ⁵ / ₁₆ 160	2 ⁴⁷ / ₆₄ 69.5	1.4370 36.5			M27	1 HS2312 H2312	UK 312	FL312	7.4
UKFL 313+HA2313 313+HE2313 313+H2313 313+HS2313	2 ³ / ₁₆ 2 ¹ / ₄ 60 2 ³ / ₈	11 ⁵ / ₈ 295	9 ²⁹ / ₆₄ 240	1 ¹⁹ / ₆₄ 33	1 25	2 ⁹ / ₃₂ 58	1 ⁷ / ₃₂ 31	6 ⁷ / ₈ 175	2 ¹³ / ₁₆ 71.5	1.5157 38.5			M27	1 HA2313 HE2313 H2313 HS2313	UK 313	FL313	9.4
UKFL 315+HA2315 315+HE2315 315+H2315	2 ⁷ / ₁₆ 2 ¹ / ₂ 65	12 ¹⁹ / ₃₂ 320	10 ¹⁵ / ₆₄ 260	1 ¹⁷ / ₃₂ 39	1 ³ / ₁₆ 30	2 ¹⁹ / ₃₂ 66	1 ³ / ₈ 35	7 ¹¹ / ₁₆ 195	3 ¹³ / ₆₄ 81.5	1.6732 42.5			M30	1 ¹ / ₈ HA2315 HE2315 H2315	UK 315	FL315	12.6
UKFL 316+HA2316 316+HE2316 316+H2316	2 ¹¹ / ₁₆ 2 ³ / ₄ 70	13 ³¹ / ₃₂ 355	11 ⁷ / ₃₂ 285	1 ¹ / ₂ 38	1 ¹ / ₄ 32	2 ¹¹ / ₁₆ 68	1 ¹ / ₂ 38	8 ⁹ / ₃₂ 210	3 ¹ / ₄ 82.5	1.7520 44.5			M33	1 ¹ / ₄ HA2316 HE2316 H2316	UK 316	FL316	15.9
UKFL 317+HA2317 317+H2317 317+HE2317	2 ¹⁵ / ₁₆ 3 75	14 ⁹ / ₁₆ 370	11 ¹³ / ₁₆ 300	1 ⁴⁷ / ₆₄ 44	1 ¹ / ₄ 32	2 ²⁹ / ₃₂ 74	1 ¹ / ₂ 38	8 ²¹ / ₃₂ 220	3 ⁵ / ₈ 92	1.8898 48			M33	1 ¹ / ₄ HA2317 H2317 HE2317	UK 317	FL317	18.4
UKFL 318+H2318	80	15 ⁵ / ₃₂ 385	12 ¹³ / ₃₂ 315	1 ⁴⁷ / ₆₄ 44	1 ¹³ / ₃₂ 36	3 76	1 ¹ / ₂ 38	9 ¹ / ₄ 235	3 ⁵ / ₈ 92	1.8898 48			M33	1 ¹ / ₄ H2318	UK 318	FL318	21.7
UKFL 319+H2319	85	15 ¹⁵ / ₁₆ 405	13 330	2 ²¹ / ₆₄ 59	1 ⁹ / ₁₆ 40	3 ¹¹ / ₁₆ 94	41	1 ³⁹ / ₆₄ 250	9 ²⁷ / ₃₂ 111	2.0472 52			M36	1 ³ / ₈ H2319	UK 319	FL319	26.0
UKFL 320+H2320	90	17 ⁵ / ₁₆ 440	14 ¹¹ / ₆₄ 360	2 ²¹ / ₆₄ 59	1 ⁹ / ₁₆ 40	3 ¹¹ / ₁₆ 94	44	1 ⁴⁷ / ₆₄ 105	5 ²⁷ / ₆₄ 115	2.2047 56			M39	1 ¹ / ₂ H2320	UK 320	FL320	31.2
UKFL 322+H2322	100	18 ¹ / ₂ 470	15 ²³ / ₆₄ 390	2 ²³ / ₆₄ 60	1 ⁹ / ₁₆ 42	3 ²⁵ / ₆₄ 96	44	1 ⁴⁷ / ₆₄ 113	4 ⁴⁹ / ₆₄ 121	2.4016 61			M39	1 ¹ / ₂ H2322			



带座轴承代号 Bearing Unit	轴径 Shaft Dia	外形尺寸 (英寸) 或 (毫米) Dimensions (in) or (mm)											螺栓 Bolt Used	轴承代号 Bearing	座代号 Housing	重量 Weight
No.	d	a	e	i	g	l	s	b	z	Bi	n	No.		No.	(kg)	
	(in.) (mm)												(mm) (in.)			
UCFT 201	12												M8	UC 201	FT204	0.51
201-8	1/2													201-8		
UCFT 202-9	9/16	4 13/32	3 35/64	3/4	7/16	1 5/32	13/32	2 23/64	1 15/32	1.2205	0.5000	M8	UC 202-9	FT204	0.50	
202	15													202		
UCFT 203	5/8	112	90	19	11	29.5	10.3	60	37.3	31.0	12.7	M8	UC 203	FT204	0.50	
202-10	5/8													202-10		
UCFT 203	17													UC 203		0.48
203-11	1 1/16													203-11		
UCFT 204-12	3/4	4 13/32	3 35/64	3/4	7/16	1 5/32	17/32	2 23/64	1 15/32	1.2205	0.5000	M8	UC 204-12	FT204	0.46	
204	20													204		
UCFT 205-14	7/8	4 7/8	3 57/64	25/32	33/64	1 7/32	1/2	2 3/4	1 9/16	1.3386	0.5630	M10	UC 205-14	FT205	0.63	
205-15	15/16													205-15		
UCFT 205	25													UC 205		0.69
205-16	1													205-16		
UCFT 206-17	1 1/16	5 9/16	4 19/32	53/64	17/32	1 11/32	1/2	3 1/4	1 45/64	1.5000	0.6260	M10	UC 206-17	FT206	0.91	
206-18	1 1/8													206-18		
UCFT 206	30													UC 206		0.91
206-19	1 3/16													206-19		
UCFT 206-20	1 1/4													UC 206-20		
206-20	1 1/4													206-20		
UCFT 207-20	1 1/4													UC 207-20		
207-21	1 5/16													207-21		
UCFT 207-22	1 3/8	6 1/8	5 1/8	27/32	9/16	1 7/16	35/64	3 3/4	1 27/32	1.6890	0.6890	M12	UC 207-22	FT207	1.24	
207	35													207		
UCFT 207-23	1 7/16													UC 207-23		
207-23	1 7/16													207-23		
UCFT 208-24	1 1/2	6 3/4	5 21/32	15/16	9/16	1 17/32	35/64	4 1/8	2 1/8	1.9370	0.7480	M12	UC 208-24	FT208	1.55	
208-25	1 9/16													208-25		
UCFT 208	40													UC 208		1.55
208	40													208		
UCFT 209-26	1 5/8													UC 209-26		
209-27	1 11/16													209-27		
UCFT 209-28	1 3/4	179	148.4	23.8	14	39.7	16	111	54.0	49.2	19.0	M14	UC 209-28	FT209	1.90	
209	45													209		
UCFT 210-30	1 7/8													UC 210-30		
210-31	1 15/16													210-31		
UCFT 210	50													UC 210		2.18
210	50													210		
UCFT 211-32	2													UC 211-32		
211-34	2 1/8													211-34		
UCFT 211	55													UC 211		3.05
211	55													211		
UCFT 211-35	2 3/16													UC 211-35		
211-35	2 3/16													211-35		
UCFT 212-36	2 1/4													UC 212-36		
212-37	2 5/16													212-37		
UCFT 212	60													UC 212		4.02
212	60													212		
UCFT 212-39	2 7/16													UC 212-39		
212-39	2 7/16													212-39		

带座轴承代号 Bearing Unit	轴径 Shaft Dia	外形尺寸 (英寸) 或 (毫米) Dimensions (in) or (mm)											螺栓 Bolt Used	轴承代号 Bearing	座代号 Housing	重量 Weight
No.	d	a	e	i	g	l	s	b	z	Bi	n	No.		No.	(kg)	
	(in.) (mm)												(mm) (in.)			
HCFT 204-12	3/4	4 13/32	3 35/64	3/4	7/16	1 5/32	13/32	2 23/64	1 15/32	1.3465	0.6732	M8	HC 204-12	FT204	0.52	
204	20													204		
HCFT 205-14	7/8													HC 205-14		
205-15	15/16													205-15		
UCFT 205	25													UC 205		0.69
205-16	1													205-16		
HCFT 206-17	1 1/16													HC 206-17		
206-18	1 1/8													206-18		
UCFT 206	30													UC 206		1.02
206-19	1 3/16													206-19		
UCFT 206-20	1 1/4													UC 206-20		
206-20	1 1/4													206-20		
HCFT 207-20	1 1/4													HC 207-20		
207-21	1 5/16													207-21		
UCFT 207-22	1 3/8	6 1/8	5 1/8	27/32	9/16	1 7/16	35/64	3 3/4	1 27/32	1.4803	0.7402	M12	UC 207-22	FT207	1.38	
207	35													207		
UCFT 207-23	1 7/16													UC 207-23		
207-23	1 7/16													207-23		
HCFT 208-24	1 1/2	6 3/4	5 21/32	15/16	9/16	1 17/32	35/64	4 1/8	2 5/16	1.6850	0.8425	M12	HC 208-24	FT208	1.73	
208-25	1 9/16													208-25		
UCFT 208	40													UC 208		1.73
208	40													208		
HCFT 209-26	1 5/8													HC 209-26		
209-27	1 11/16													209-27		
UCFT 209-28	1 3/4	179	148.4	23.8	14	39.7	16	111	58.7	42.8	21.4	M14	UC 209-28	FT209	2.04	
209	45													209		
HCFT 210-30	1 7/8													HC 210-30		
210-31	1 15/16													210-31		
UCFT 210	50													UC 210		2.37
210	50													210		
HCFT 211-32	2													HC 211-32		
211-34	2 1/8													211-34		
UCFT 211	55													UC 211		3.34
211	55													211		
UCFT 211-35	2 3/16													UC 211-35		
211-35	2 3/16													211-35		
HCFT 212-36	2 1/4													HC 212-36		
212-37	2 5/16													212-37		
UCFT 212	60													UC 212		4.34
212	60													212		
UCFT 212-39	2 7/16													UC 212-39		
212-39	2 7/16													212-39		